

TS-AMP

Amplified load cell

Accessories

A

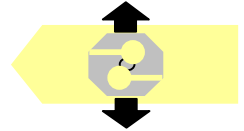
Rod end bearings



OUT
4-20mA

OUT
± 5V

OUT
± 10V



Protection Class: IP65
Completely LASER welded
Long term high stability
For dynamic applications.
Now as standard with M12 connector
on the load cell, and female M12 with 3m cable



RoHS
COMPLIANCE

Dimensions

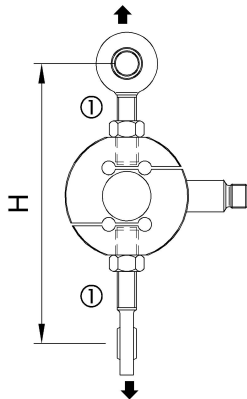
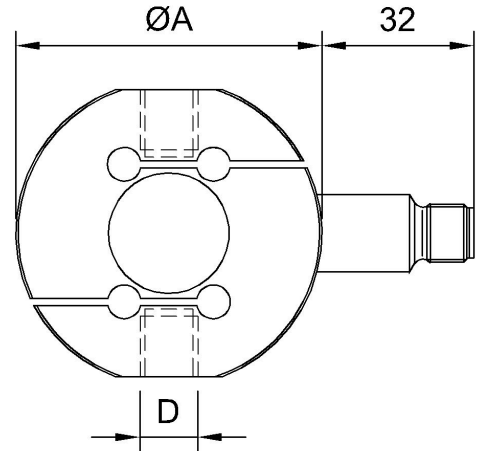
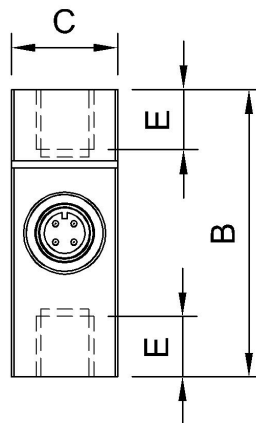
[mm]



①

ACCESSORIES
Rod end bearings

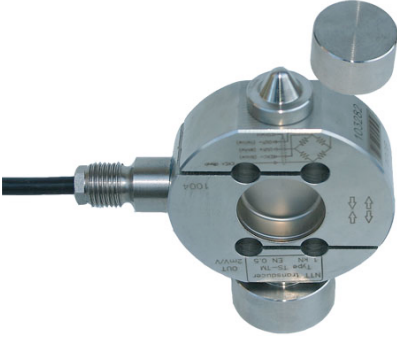
LOAD	CODE
25 ÷ 500 kg	PFE12U
500 kg ÷ 2t	PFE16U
2.5 t	PFE20U
5, 7.5 t	PFE25U



LOAD	A	B	C	D	E	F	H
10 kg							
25 kg							
50 kg							
100 kg	63.5	59.5	22	M12X1.75	12	~112	~ 134
200 kg							
300 kg							
500 kg							
500 kg							
1 t	82	78	30	M16X2	20	~130	~ 170
2 t							
2.5t	82	78	30	M20X1.5	20	~130	~ 194
5 t							
7.5t	102	90	45	M24X2	21.5	~150	~ 235

Technical Data

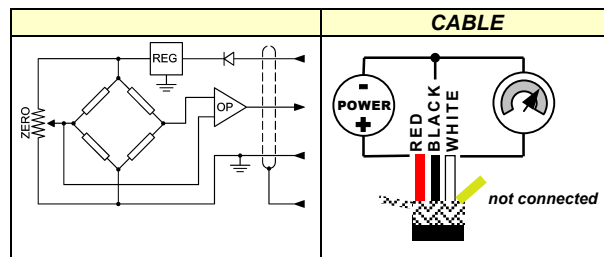


 <p>TS-AMP Compression kit</p>	ACCURACY	0.03%
	NOMINAL LOAD (E_{max})	10 - 25 - 50 - 100 - 200 - 300 - 500 kg 1 - 2 - 2.5 - 5 - 7.5 t
	NOMINAL SENSITIVITY CALIBRATION TOLERANCE	4-20 mA (3 wires), $\pm 5V^*$ or $\pm 10V^*$ $< \pm 0.1\%$
	NON LINEARITY	$\leq \pm 0.023\%$
	NON REPEATABILITY	$\leq \pm 0.015\%$
	TEMPERATURE EFFECT (10 °C)	
	a) on zero	$\leq \pm 0.028\%$
	b) on sensitivity	$\leq \pm 0.012\%$
	NOMINAL POWER SUPPLY	4-20mA and $\pm 5V \rightarrow 12-24Vdc$ $\pm 10V \rightarrow 18-24Vdc$
	MAX. POWER SUPPLY	28Vdc
	MAX. ABSORPTION (without load applied)	30mA
	LOADING RESISTANCE:	
	a) tension	min. 3K Ω
b) current	from 0 to 470 Ω	
INSULATION RESISTANCE	$> 2 G\Omega$	
ZERO BALANCE	$\pm 1\%$	
RESPONSE FREQUENCY	from 0.5 to 5 kHz	
MECHANICAL LIMIT values referred to nominal load:		
a) minimum load	0%	
b) service load	120%	
c) max permissible load	150%	
d) breaking load	$> 300\%$	
e) max transverse load	100%	
f) max permissible dynamic load	50%	
DISPLACEMENT AT NOMINAL LOAD	~ 0.2 mm	
REFERENCE TEMPERATURE	+23°C	
TEMPERATURE NOMINAL RANGE	-10/+40 °C	
SERVICE TEMPERATURE	-20/+70 °C	
STORAGE TEMPERATURE	-20/+80 °C	
WEIGHT	~ 0.6 kg ~ 1.2 kg ~ 2.6 kg	
PROTECTION CLASS (EN 60529)	IP65	
EXECUTION MATERIAL	Stainless Steel	
CABLE LENGTH	3m	

Acceleration of gravity $g=9.80434$ m/s²
Positive output in tension

Electrical Connections

PVC 70°C shielded cable, \varnothing 4.2mm with 4 tinned \varnothing 0.14 mm² conductors.



Shield connected to the body of the load cell.