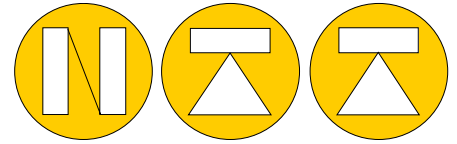




C2S 20t -200t Low profile cell



NORDIC TRANSDUCER

NOW also as option with amplified output: 4-20mA, 0-5V or 0-10VDC

LOW PROFILE COMPRESSION LOAD CELLS



Capacities from 20ton to 200ton for use in:

- ° Bigger platform scales
- ° Hopper / silo weighing
- ° Other force measuring applications

The C2S is a very low profile hermetically welded sealed load cell made in stainless steel with IP68 protection grade.

Their compact size makes them ideally suited for applications where space also is limited.

UPC3S Silo mount can be supplied for 20 & 30ton capacities

SPECIFICATIONS C2S-126/165/200 2mV/V model Class C2 (C3 option)

NOMINAL LOAD	20, 30, 50, 75, 100, 150, 200t
MINIMUM WORKING RANGE	0 - 20%
COMBINED ERROR	< +/- 0.023%
NON REPEATABILITY	< +/- 0.010%
ZERO DRIFT 30 MIN	< +/- 0.028%
TEMPERATURE EFFECT 10°C	
on zero	< +/- 0.024 %
on span	< +/- 0.017 %
NOMINAL SENSITIVITY +/- 0.1%	2mV/Volt
INPUT RESISTANCE	700 Ohm
OUTPUT RESISTANCE	700 Ohm
ZERO BALANCE	0.5%
SUPPLY VOLTAGE N.10V	2 - 15 Volt

a) minimum load	0%
b) service load	120%
c) max. permissible load	150%
d) breaking load	>300%
e) max. side load	50%
f) max. dynamic load	50%

NOMINAL TEMP. RANGE	- 10/+40 °C
SERVICE TEMP. RANGE	-20/+70 °C
PROTECTION CLASS	IP68

CELL MATERIAL	Stainless steel
CABLE LENGTH	5/10 meter

PVC 105°C cable Ø6.5mm with 4 tinned conductors Ø0.35mm² and tinned shield. Gravity acceleration g=9.804427 m/s² Specifications with OIML R60 as reference.

UPC3S SILO MOUNT FOR 20t & 30t CAPACITY LOAD CELLS

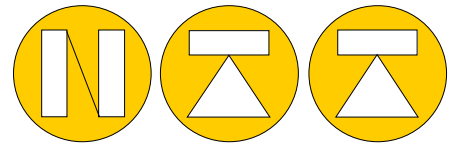
This **UPC3S** weighing unit is constructed throughout in (AISI 304) stainless steel, and design to facilitate the installation of weighing and batching systems, in silos, bins and platform scales where 100% control are wanted over mechanical connection to the load cells. This weighing unit is equipped with **Automatic Load Alignment** and **Transverse Shift Compensation** system to ensure **Excellent Measurement Performance** even in case of settling, thermal expansion, positioning error and structural deformations.

Each unit comprises a **C2S-126-H64 load cell**.



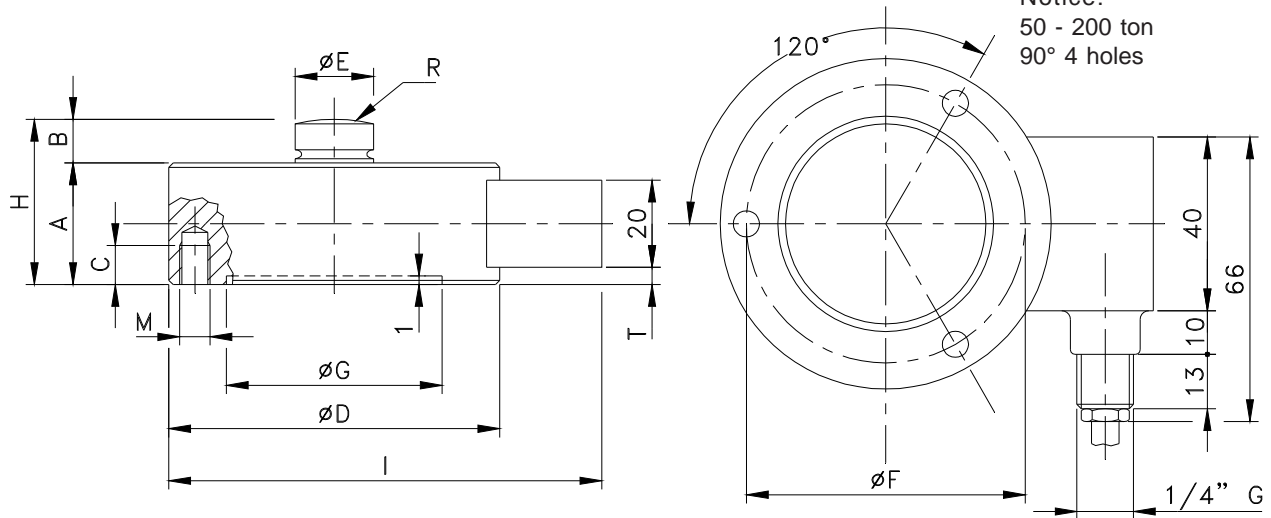


DIMENSIONS: C2S-126 20 - 30T
C2S-165 50T-100T
C2S-200 150T-200T



NORDIC TRANSDUCER

Notice:
 50 - 200 ton
 90° 4 holes



Type Load cell	A	B	C	ØD	ØE	ØF	ØG	H	I	N° HOLES	M	R	T
C2S-126-20-30t	40	14	16	126	35	105	79.5	54	148	3 xM8	8	160	15
C2S-126-20-30t*	50	14	12	126	35	90	77.3	64	148	3 xM8	8	160	15
C2S-165-50-100t	60	20	20	165	60	130	92.3	80	188	4 xM16	16	300	17
C2S-200-150-200t	80	30	20	200	80	152	107	110	223	4 xM16	16	300	23

C2S-126-20-30t* to be used in connection with UPC3S silo mount, and with AMP model

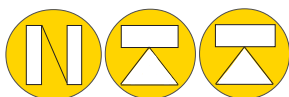
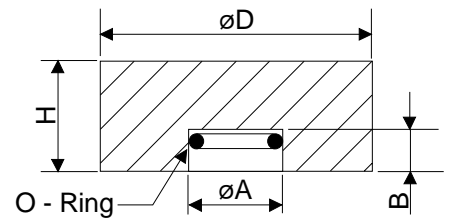
FIXING BOLTS always use Class 12.9 bolts

Diameter: M8 M16
 Tightening torque: 80Nm 230Nm

Displacement:	20-30t	50-100t	150-200t
mm:	0.16	0.23	0.36
Weight kg:	3.4	9.4	18.2

Load heads

Type	Capacity	ØD	H	ØA	B
TIC35	Ø126 20 & 30t	76	30	36	12
TIC60	Ø165 50t-100t	126	38	61	12
TIC80	Ø200 150-200t	128	68	81	21



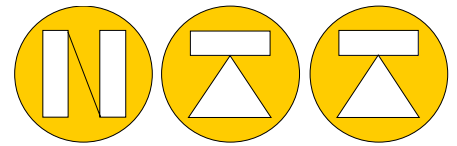
Nordic Transducer

Als Odde, DK-9560 Hadsund Denmark
 tlf. +45 98581444, Fax.: +45 98581866
 E-mail: ntt@ntt.dk WEB: <http://www.ntt.dk>

All specifications subject to change without notice



C2S-AMP Amplified Load cell

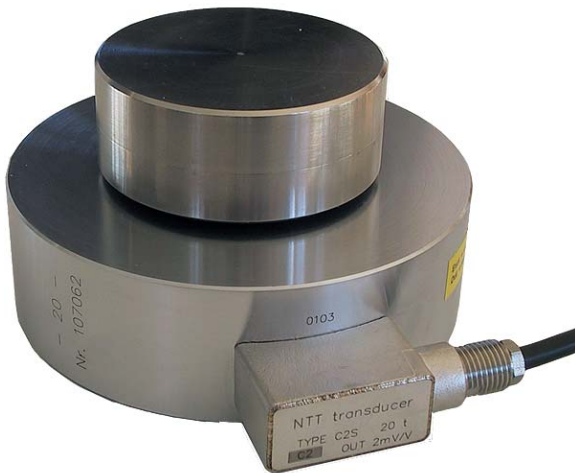


NORDIC TRANSDUCER

INDUSTRIAL STANDARD OUTPUT

4-20mA - 0..5Volt or 0..10Volt 3wire system

The whole range of **C2S** load cells can now also be supplied with internal amplifier for usage at single cells jobs say for testing jobs and the like, for direct connection to PLC



LOAD CELL STANDARD CABLE 2mV/V

Exct.+ / INPUT+ RED
Exct. - / INPUT- BLACK
Signal + / OUTPUT+ WHITE
Signal - / OUTPUT- YELLOW
SHIELD: Not connected to load cell

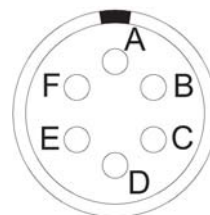
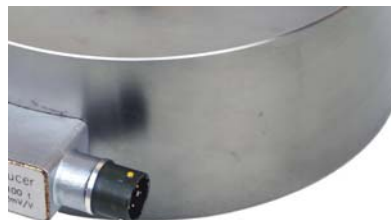
The accuracy for the AMP model is:
+/- 0.03% Non Linearity,
+/- 0.01% Non Repeatability
Calibration tolerance is +/-0.1%

Nominal power supply is 12-24Vdc max. 28 Volt

Max. absorption is 30mA (without load applied)

A 5 point test report can also be supplied as a option at order time.

C2S can be supplied with cable or connector. MIL or M12 Connector



M12 Connector for 2mV/V signal

1: Exct. / INPUT +
3: Exct. - / INPUT -
2: Signal + / OUTPUT +
4: Signal - / OUTPUT -
SHIELD: Not connected to load cell

AMP Mill connector for 4-20mA output:

Power supply 12-24VDC = A (RED)
0V -Signal = B (BLACK)
Signal Output + = D (WHITE)
Earth / shield = F connected to Body

M12 Connector for mA or Volt signal outputsignal

1: Power +
3: Power - / signal -
2:
4: Signal + / OUTPUT +
SHIELD: Not connected to load cell

Picture seen from soldering side

AMP

If supplied with Connector & mounted with cable, the cable length is 5m as standard, other lengths as option.



Nordic Transducer

Als Odde, DK-9560 Hadsund Denmark
tlf. +45 98581444, Fax.: +45 98581866
E-mail: ntt@ntt.dk WEB: <http://www.ntt.dk>